



ICON HARNESS/CONTAINER
PACKING MANUAL

ADDENDUM

SKYHOOK COMPATIBLE
ICON

WITHOUT

SKYHOOK FITTED

PACKING

INSTRUCTION

MARCH 2012





ICON HARNESS/CONTAINER PACKING MANUAL

TM 162

REVISED August 2011 Addendum March 2012

ICON PRO, STUDENT & ACCURACY
CONTAINER & HARNESS SIZES

	MAIN	RESERVE SIZE
I1	90-96 SQ.FT	99 SQ.FT
I2	96-111	99-110
I3	117-132	110-120
I4	132-150	135-150
I5	150-168	150-175
I6	168-190	175-190
I7	210-250	190-250
I8	210-250	190-250
I9	250-270	220-250
S5	250-290	220-250
S6	168-190	175-190
S7	210-250	190-250
S8	250-270	220-250
S9	250-290	220-250

PRIOR TO ASSEMBLY, PACKING OR USE OF THIS PRODUCT, READ AND FULLY UNDERSTAND THE CONTENT AND ALL WARNINGS CONTAINED IN THIS MANUAL, AND CAREFULLY FOLLOW ALL INSTRUCTIONS BEFORE AND DURING PACKING AND USING THE PARACHUTE SYSTEM

AERODYNE Research LLC 1407 Flightline Blvd. Unit 14, Deland, FL 32724
TEL: (813)891-6300 FAX: (831)891-6315 www.flyaerodyne.com

CONTENTS

CONTENTS	i
WARNING	ii
1. TECHNICAL SPECIFICATIONS	
1.1 TSO MARKING	
1.1.1 FRONT LEFT RESERVE RISER LABEL	1
1.2.2 DATA CARD POCKET LABEL	
1.1.3 WARNING LABEL	
2. RESERVE PACKING	
2.1 RESERVE PACKING : SKYHOOK COMPATIBLE WITH NO SKYHOOK FITTED	
2.1.1 SETTING UP THE RSL	2
2.1.2 CLOSING THE RESERVE CONTAINER	3

PRIOR TO ASSEMBLY, PACKING OR USE OF THIS PRODUCT, READ AND FULLY UNDERSTAND THE CONTENT AND ALL WARNINGS CONTAINED IN THIS MANUAL, AND CAREFULLY FOLLOW ALL INSTRUCTIONS BEFORE AND DURING PACKING AND USING THE PARACHUTE SYSTEM

AERODYNE Research LLC 1407 Flightline Blvd. Unit 14, Deland, FL 32724

TEL: (813)891-6300 FAX: (831)891-6315 www.flyaerodyne.com

Page i

WARNING!

1. Proper training and/or experience are required to lower the risk of serious injury or death.

NEVER USE THIS EQUIPMENT UNLESS YOU HAVE:

- A. READ THIS WARNING LABEL, APPROPRIATE OWNERS MANUAL, PACKING INSTRUCTIONS AND COMPLETED A "CONTROLLED PROGRAM OF INSTRUCTION" IN THE USE OF THIS PARACHUTE SYSTEM.

OR

- B. READ THIS WARNING LABEL AND APPROPRIATE OWNERS MANUAL AND PACKING INSTRUCTIONS AND COMPLETED AT LEAST 100 RAM AIR PARACHUTE JUMPS.

2. LOWER THE RISK OF DEATH, SERIOUS INJURY, CANOPY DAMAGE AND HARD OPENINGS BY NEVER EXCEEDING THE MAXIMUM LIMITS:

- A. 136 Kg
- B. 150 Knots

HARD OPENINGS CAN CAUSE EQUIPMENT DAMAGE, SEVERE INJURY OR DEATH. PARACHUTE SYSTEMS SOMETIMES FAIL TO FUNCTION PROPERLY EVEN WHEN CORRECTLY ASSEMBLED, PACKED AND OPERATED. YOU RISK SERIOUS INJURY OR DEATH EACH TIME YOU USE THIS OR ANY PARACHUTE SYSTEM, BY DOING SO YOU WILL BE DEEMED TO HAVE EXPRESSLY AND IMPLIEDLY ASSUMED THIS RISK

AERODYNE RESEARCH, LLC
1407 Flight Line Blvd. Unit 14
Deland, FL 32724

PRIOR TO ASSEMBLY, PACKING OR USE OF THIS PRODUCT, READ AND FULLY UNDERSTAND THE CONTENT AND ALL WARNINGS CONTAINED IN THIS MANUAL, AND CAREFULLY FOLLOW ALL INSTRUCTIONS BEFORE AND DURING PACKING AND USING THE PARACHUTE SYSTEM

AERODYNE Research LLC 1407 Flightline Blvd. Unit 14, Deland, FL 32724

TEL: (813)891-6300 FAX: (831)891-6315 www.flyaerodyne.com

Page ii

1.1 TSO MARKING

Removal of any of the TSO labels or Warning labels VOIDS the TSO and warranty.

1.1.1 TSO C23d ON LEFT RESERVE RISER

AERODYNE RESEARCH LLC 1405 FLIGHT LINE BLVD STE 20 DELAND, FL 32724 USA
TSO C23d D.O.M.:
PART NO: HARNESS TYPE: SERIAL NO.
CONTAINER SIZE: VERSION: HARNESS SIZE:
MAX. OPERATING LIMITS: 136 Kg 150 KTS
AVERAGE PEAK FORCE DURING 4.3.4 STRENGTH TESTS: 5.45 G's

1.1.2 DATA CARD POCKET LABEL

AERODYNE RESEARCH LLC 1405 FLIGHT LINE BLVD STE 20 DELAND, FL 32724

MAX SPEED	KTS.	KTS
MAX WEIGHT	KG	KG

LIMITATIONS: Maximum Weight and Speed is the lower of the 2 values:
136 KG/ 150 KTS or the Reserve Canopy TSO Maximum Limitations

1.1.3 WARNING LABEL

WARNING!

1. PARACHUTING IS DANGEROUS. PARACHUTE SYSTEMS AND THEIR COMPONENTS SOMETIMES FAIL TO FUNCTION PROPERLY EVEN WHEN CORRECTLY ASSEMBLED, PACKED AND OPERATED. BEFORE YOU USE THIS PARACHUTE ASSEMBLY, YOU MUST FULLY UNDERSTAND AND ACCEPT THAT YOU RISK SERIOUS PERMANENT INJURY OR DEATH EACH TIME YOU USE THIS PARACHUTE ASSEMBLY. PROPER TRAINING AND EXPERIENCE ARE REQUIRED TO LOWER THE RISK OF SERIOUS PERMANENT INJURY OR DEATH.

ALSO, YOU MUST:

A. READ AND FULLY UNDERSTAND THIS WARNING LABEL, THE APPROPRIATE OWNERS MANUAL, SUPPLEMENTAL INFORMATION AND PACKING INSTRUCTIONS, FOLLOW ALL MANUFACTURERS' RECOMMENDATIONS (INCLUDING BUT NOT LIMITED TO WING LOADING RECOMMENDATIONS), AND ENSURE THAT YOU HAVE COMPLETED AN APPROPRIATE "CONTROLLED PROGRAM OF INSTRUCTION" IN THE USE OF THIS PARACHUTE ASSEMBLY AND EACH OF ITS COMPONENTS.

OR

B. READ AND FULLY UNDERSTAND THIS WARNING LABEL, THE APPROPRIATE OWNERS MANUAL, SUPPLEMENTAL INFORMATION AND PACKING INSTRUCTIONS, FOLLOW ALL MANUFACTURERS' RECOMMENDATIONS (INCLUDING BUT NOT LIMITED TO MANUFACTURER'S WING LOADING RECOMMENDATIONS), AND HAVE COMPLETED AT LEAST 100 RAM AIR PARACHUTE JUMPS.

2. THE RISK OF DEATH, SERIOUS INJURY, CANOPY DAMAGE AND HARD OPENINGS MAY BE LOWERED BY STRICTLY COMPLYING WITH ALL MANUFACTURERS' RECOMMENDATIONS AND SAFE PARACHUTING PRACTICES AND BY NEVER EXCEEDING THE LIMITS OF YOUR EXPERIENCE LEVEL AND THE MAXIMUM EQUIPMENT LIMITS, INCLUDING THE MAXIMUM LIMITS FOR THIS HARNESS/CONTAINER OF:

- Maximum Exit Weight (weight of jumper + clothing + equipment): 136 Kg (300 pounds)
- Maximum Opening Velocity: 150 Knots (172 mph)

PRIOR TO ASSEMBLY, PACKING OR USE OF THIS PRODUCT, READ AND FULLY UNDERSTAND THE CONTENT AND ALL WARNINGS CONTAINED IN THIS MANUAL, AND CAREFULLY FOLLOW ALL INSTRUCTIONS BEFORE AND DURING PACKING AND USING THE PARACHUTE SYSTEM

AERODYNE Research LLC 1407 Flightline Blvd. Unit 14, Deland, FL 32724

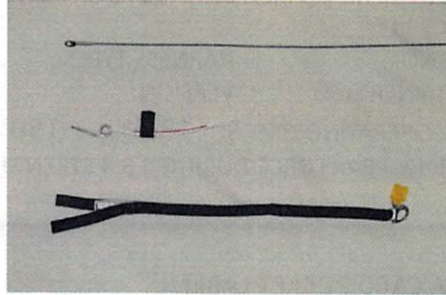
TEL: (813)891-6300 FAX: (813)891-6315 www.flyaerodyne.com

Page 1

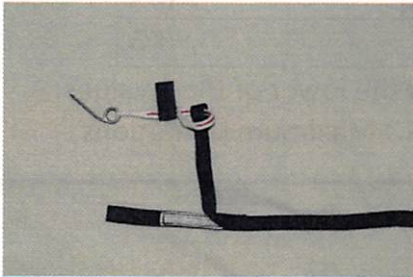
2.1 RESERVE PACKING : SKYHOOK COMPATIBLE ICON WITH NO SKYHOOK FITTED

2.1.1 SETTING UP THE RSL LANYARD

- Ripcord with Marine Eye
- Reserve Pin
- RSL



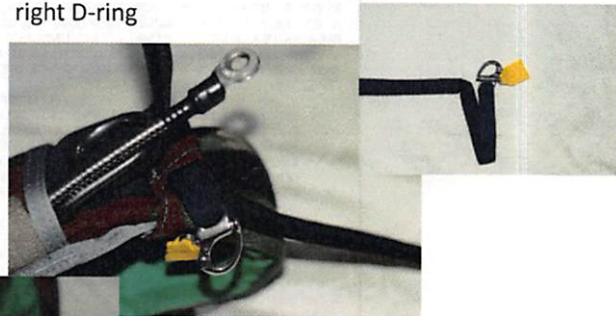
1. Loop the Reserve Pin through the open loop on the RSL. Notice NOT to loop it through the labeled loop for the Cutaway cable. Careful not to catch the Velcro onto the lanyard itself. To avoid this, slightly bend the Velcro parallel to the lanyard and pull in one quick but gentle motion.



2. Place the RSL on the right riser and attach via Velcro routing..



3. Tuck end into pocket on yoke near top of right D-ring



Tuck loop away as shown

PRIOR TO ASSEMBLY, PACKING OR USE OF THIS PRODUCT, READ AND FULLY UNDERSTAND THE CONTENT AND ALL WARNINGS CONTAINED IN THIS MANUAL, AND CAREFULLY FOLLOW ALL INSTRUCTIONS BEFORE AND DURING PACKING AND USING THE PARACHUTE SYSTEM

AERODYNE Research LLC 1407 Flightline Blvd. Unit 14, Deland, FL 32724

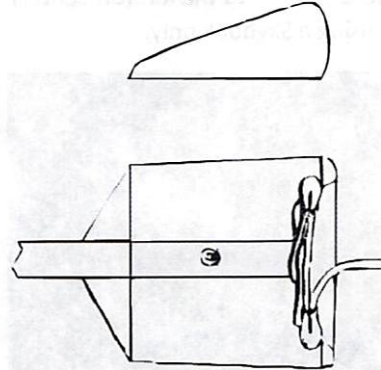
TEL: (813)891-6300 FAX: (813)891-6315 www.flyaerodyne.com

2.1.2 CLOSING THE SERVE CONTAINER

1. Prepare the Freebag shape as shown.



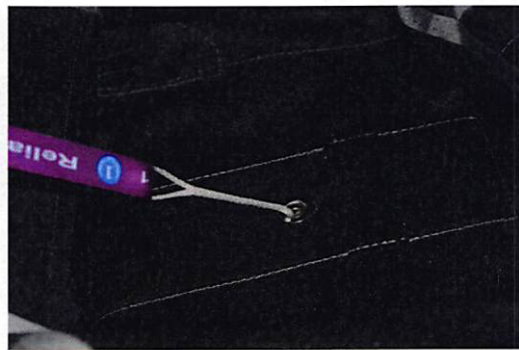
Side view and Top view.



2. Set up the rig as shown before packing.



3. Thread the pull-up cord through closing loop.



ICON HARNESS/CONTAINER PACKING MANUAL ADDENDUM MARCH 2012

4. Rotate Freebag into reserve container filling lower corners of reserve container. Close flap #1 as shown. Thread the closure loop thru the center Grommet. The Grommet to the left (off center) is used when using a Skyhook only.



5. Close Flap #2a as shown. Note the Green and Red pockets. These are used for a Skyhook only. As we are NOT packing a Skyhook, we leave these pockets alone. Refer to manual on packing a Skyhook.



6. Fold bridle crossways as shown in manual.



PRIOR TO ASSEMBLY, PACKING OR USE OF THIS PRODUCT, READ AND FULLY UNDERSTAND THE CONTENT AND ALL WARNINGS CONTAINED IN THIS MANUAL, AND CAREFULLY FOLLOW ALL INSTRUCTIONS BEFORE AND DURING PACKING AND USING THE PARACHUTE SYSTEM

AERODYNE Research LLC 1407 Flightline Blvd. Unit 14, Deland, FL 32724

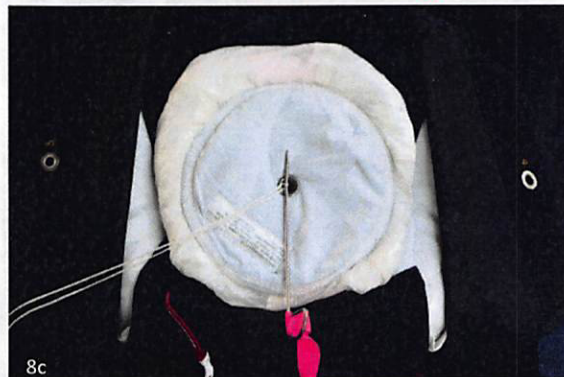
TEL: (813)891-6300 FAX: (813)891-6315 www.flyaerodyne.com



7. Pass a pull up cord cleanly through the pilot chute from bottom to top plate as shown in picture



8. Ensure the lower spring coil is up against the spring ejector plate and that the excess bridle sits just under the pilot chute without catching the fabric under the spring (picture #8a). Press the pilot chute down into position and hold with a temporary pin. Make sure not to catch the pilot chute fabric under the plate. Also, do not tuck the pilot chute under the lateral flaps (#3 and #4 flaps) but instead roll it up in between both pilot chute plates (pictures# 8b & 8c).



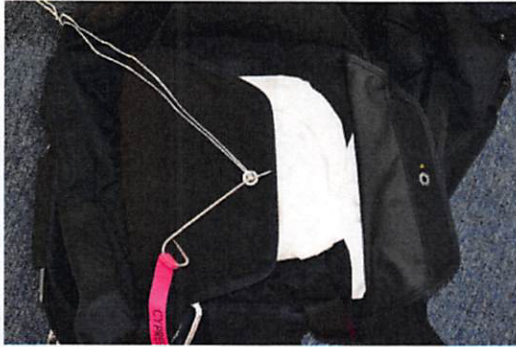
PRIOR TO ASSEMBLY, PACKING OR USE OF THIS PRODUCT, READ AND FULLY UNDERSTAND THE CONTENT AND ALL WARNINGS CONTAINED IN THIS MANUAL, AND CAREFULLY FOLLOW ALL INSTRUCTIONS BEFORE AND DURING PACKING AND USING THE PARACHUTE SYSTEM

AERODYNE Research LLC 1407 Flightline Blvd. Unit 14, Deland, FL 32724

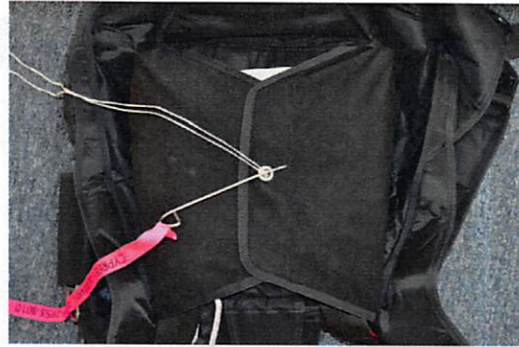
TEL: (813)891-6300 FAX: (831)891-6315 www.flyaerodyne.com

ICON HARNESS/CONTAINER PACKING MANUAL ADDENDUM MARCH 2012

9. Close the right flap (#3)



10. Close the left flap (#4).



11. Close flap #5 (picture 11a). Close flap #6 (picture 11b) and insert the reserve pin through the eye of the reserve cable first, then through reserve closing loop. Make sure to tuck the closing pin under the protector pocket.



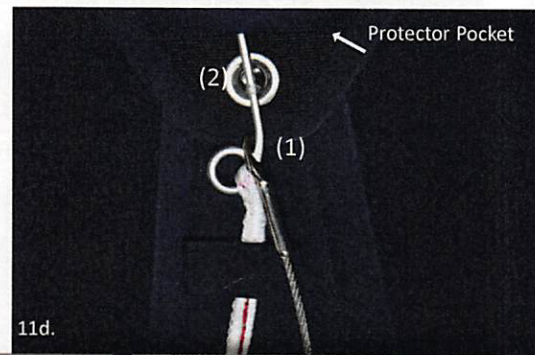
11a.



11b.



11c.



11d.

12. Seal with rigger's thread and lead seal per applicable regulations. Close the final cover flap and tuck the tabs under the #5 flap.



PRIOR TO ASSEMBLY, PACKING OR USE OF THIS PRODUCT, READ AND FULLY UNDERSTAND THE CONTENT AND ALL WARNINGS CONTAINED IN THIS MANUAL, AND CAREFULLY FOLLOW ALL INSTRUCTIONS BEFORE AND DURING PACKING AND USING THE PARACHUTE SYSTEM

AERODYNE Research LLC 1407 Flightline Blvd. Unit 14, Deland, FL 32724

TEL: (813)891-6300 FAX: (831)891-6315 www.flyaerodyne.com

DOCUMENT END

PRIOR TO ASSEMBLY, PACKING OR USE OF THIS PRODUCT, READ AND FULLY UNDERSTAND THE CONTENT AND ALL WARNINGS CONTAINED IN THIS MANUAL, AND CAREFULLY FOLLOW ALL INSTRUCTIONS BEFORE AND DURING PACKING AND USING THE PARACHUTE SYSTEM

AERODYNE Research LLC 1407 Flightline Blvd. Unit 14, Deland, FL 32724

TEL: (813)891-6300 FAX: (831)891-6315 www.flyaerodyne.com